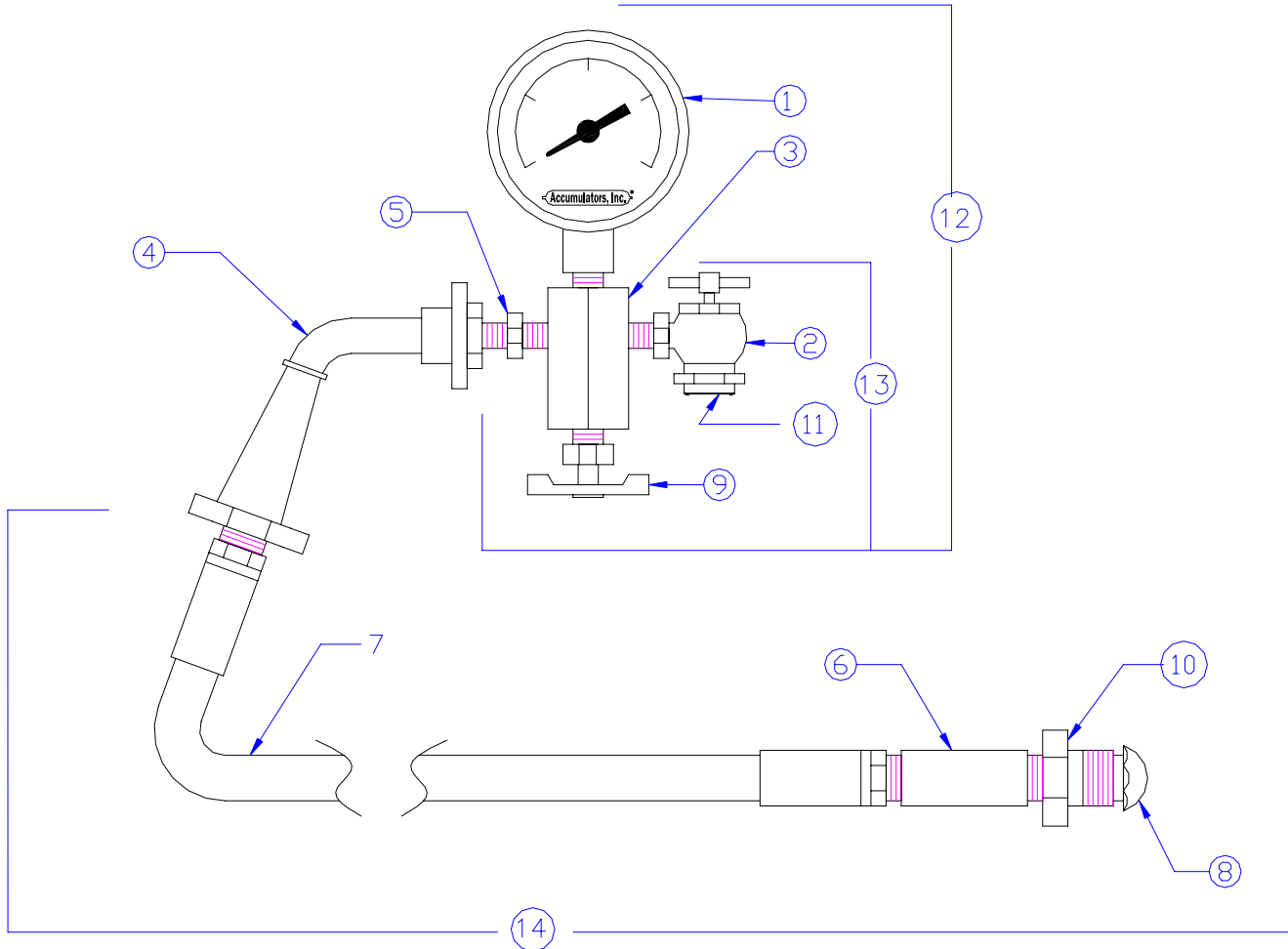


Charging and Gauging Assemblies for 3000 psi Accumulators



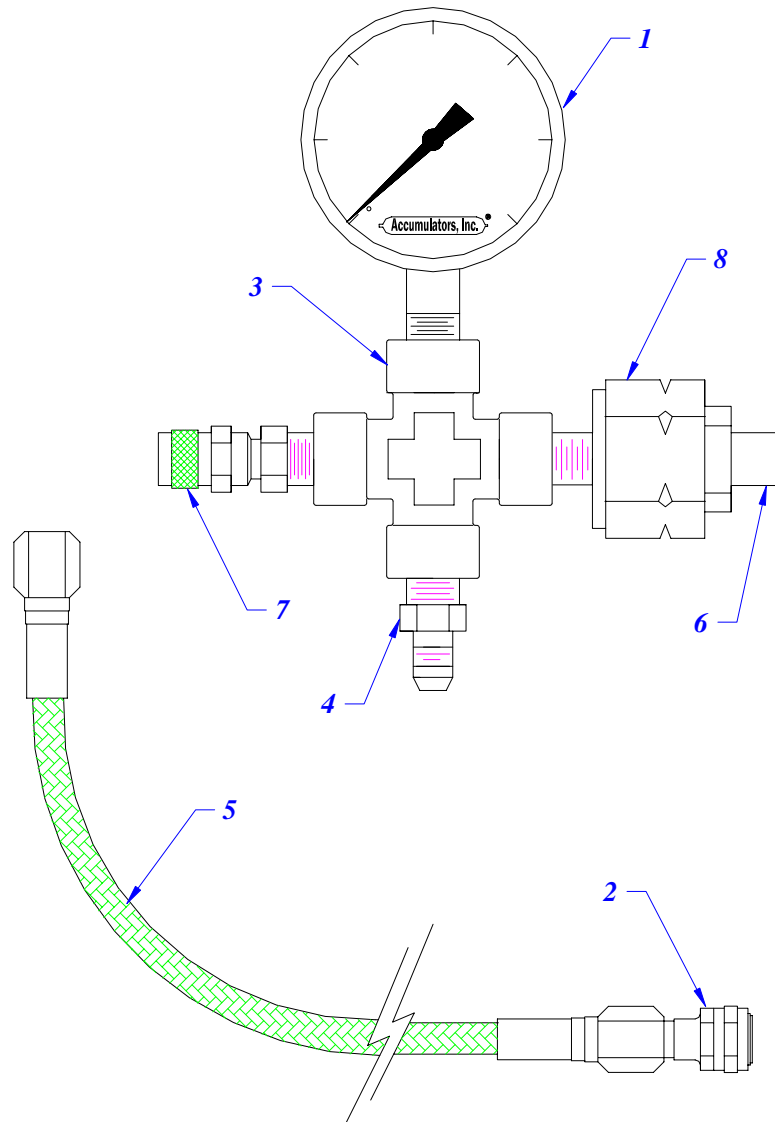
| List of Component Parts | | |
|-------------------------|---|---------------|
| | Description | Part Number |
| 1 | 3000 psi Gauge | AI-CG3-001-SS |
| | 6000 psi Gauge | AI-CG6-001-SS |
| 2 | Air Chuck | AI-CG-002 |
| 3 | Adapter Block | AI-CG-003 |
| 4 | Swivel Connector | AI-CG-004 |
| 5 | Tank Valve | AI-CG-005 |
| 6 | Coupler | AI-CG-006 |
| 7 | Hose | AI-CG-007-SS |
| 8 | Gland (Nipple) | AI-CG-008 |
| 9 | Bleed Valve | AI-CG-009 |
| 10 | Nut | AI-CG-011 |
| 11 | Copper Washer | AI-CG-020 |
| 12 | Gauging & Head Assembly, 3000 psi Gauge | AI-CG3-013 |
| | Gauging & Head Assembly, 6000 psi Gauge | AI-CG6-013 |
| 13 | Head Assembly, 3000 psi Gauge | AI-CG3-014 |
| | Head Assembly, 6000 psi Gauge | AI-CG6-014 |
| 14 | Hose Assembly | AI-CG-017-SS |
| | Valve Core (internal) | |

| | |
|-----------------------------------|---------------|
| Full Assembly with 3000 psi Gauge | AI-CG3-000-SS |
| Full Assembly with 6000 psi Gauge | AI-CG6-000-SS |

Do not use for over 3000 psi.
 Gauge for indication only.

Note: AI-CG3-000-SS and AI-CG6-000-SS are rated for a MAWP of 3000 psi.

Charging and Gauging Assembly for 6000 psi Accumulators



Full Assembly

| List of Component Parts | | |
|-------------------------|---------------------|---------------|
| | Description | Part Number |
| | Full Assembly | AI-CG6-550-SS |
| 1 | Gauge, 6000 psi | AI-CG6-501-SS |
| 2 | Air Chuck | AI-CG6-502-SS |
| 3 | Cross, SS | AI-CG6-503-SS |
| 4 | J.I.C. Adapter | AI-CG6-506-SS |
| 5 | Hose, 8 ft. | AI-CG6-507-SS |
| 6 | Cylinder Valve Tube | AI-CG6-508-SS |
| 7 | Bleed Valve | AI-CG6-509-SS |
| 8 | Cylinder Valve Nut | AI-CG6-511-SS |

Hose Assembly

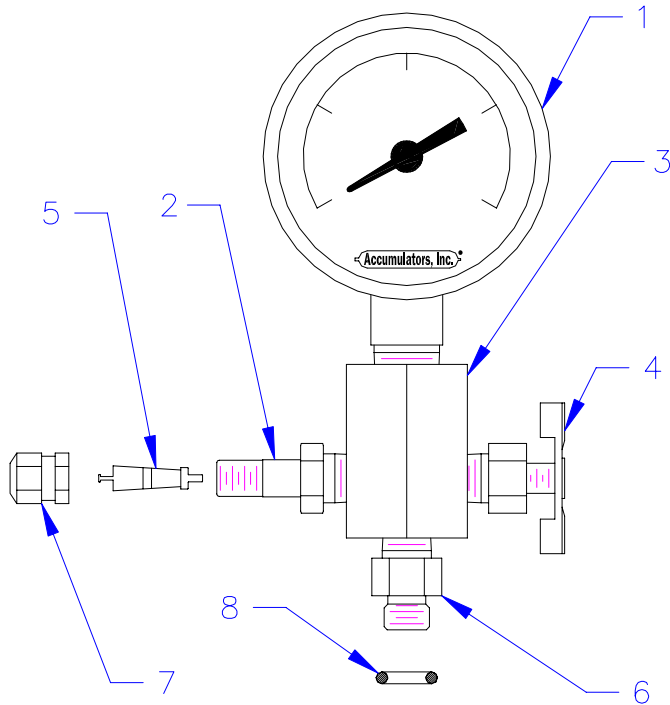
| List of Component Parts | | |
|-------------------------|----------------|---------------|
| | Description | Part Number |
| | Head Assembly | AI-CG6-517-SS |
| 4 | J.I.C. Adapter | AI-CG6-506-SS |
| 5 | Hose, 8 ft. | AI-CG6-507-SS |
| 7 | Air Chuck | AI-CG6-502-SS |

All materials stainless steel.

Gauging & Head Ass'y

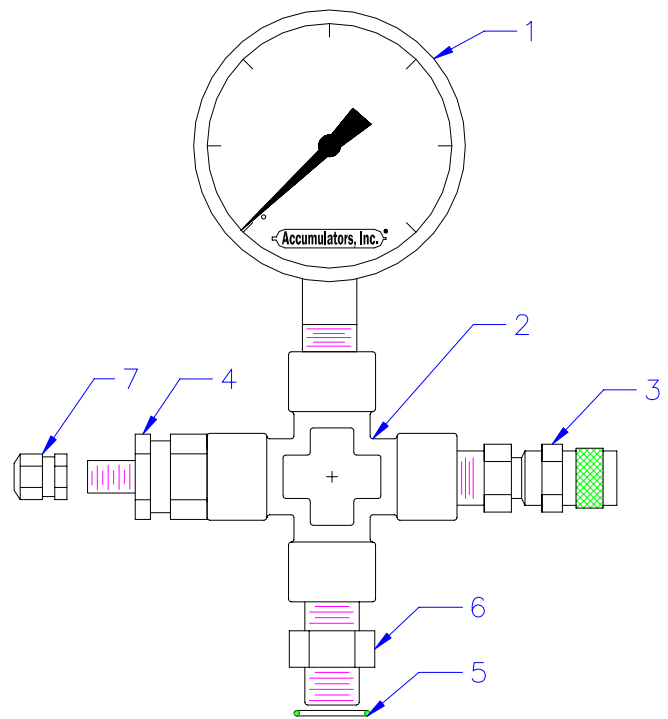
| List of Component Parts | | |
|-------------------------|----------------------|---------------|
| | Description | Part Number |
| | Gauging & Head Ass'y | AI-CG6-513-SS |
| 1 | Gauge, 6000 psi | AI-CG6-501-SS |
| 3 | Cross, SS | AI-CG6-503-SS |
| 4 | J.I.C. Adapter | AI-CG6-506-SS |
| 6 | Cylinder Valve Tube | AI-CG6-508-SS |
| 7 | Bleed Valve | AI-CG6-509-SS |
| 8 | Cylinder Valve Nut | AI-CG6-511-SS |

Permanent Mount Pressure Monitor



3000 psi Permanent Mount Pressure Monitor
 AI-PM3-000

| List of Component Parts | | |
|-------------------------|--------------------------|-------------|
| | Description | Part Number |
| 1 | Gauge, 3000 psi | AI-CG3-001 |
| 2 | Tank Valve | AI-CG-005 |
| 3 | Pressure Monitor Block | AI-PM3-003 |
| 4 | Bleed Valve | AI-PM3-009 |
| 5 | Valve Core | AI-S-304 |
| 6 | Pressure Monitor Bushing | AI-PM3-033 |
| 7 | Valve Cap | AI-S-303 |
| 8 | O-Ring | AI-GT3-311 |

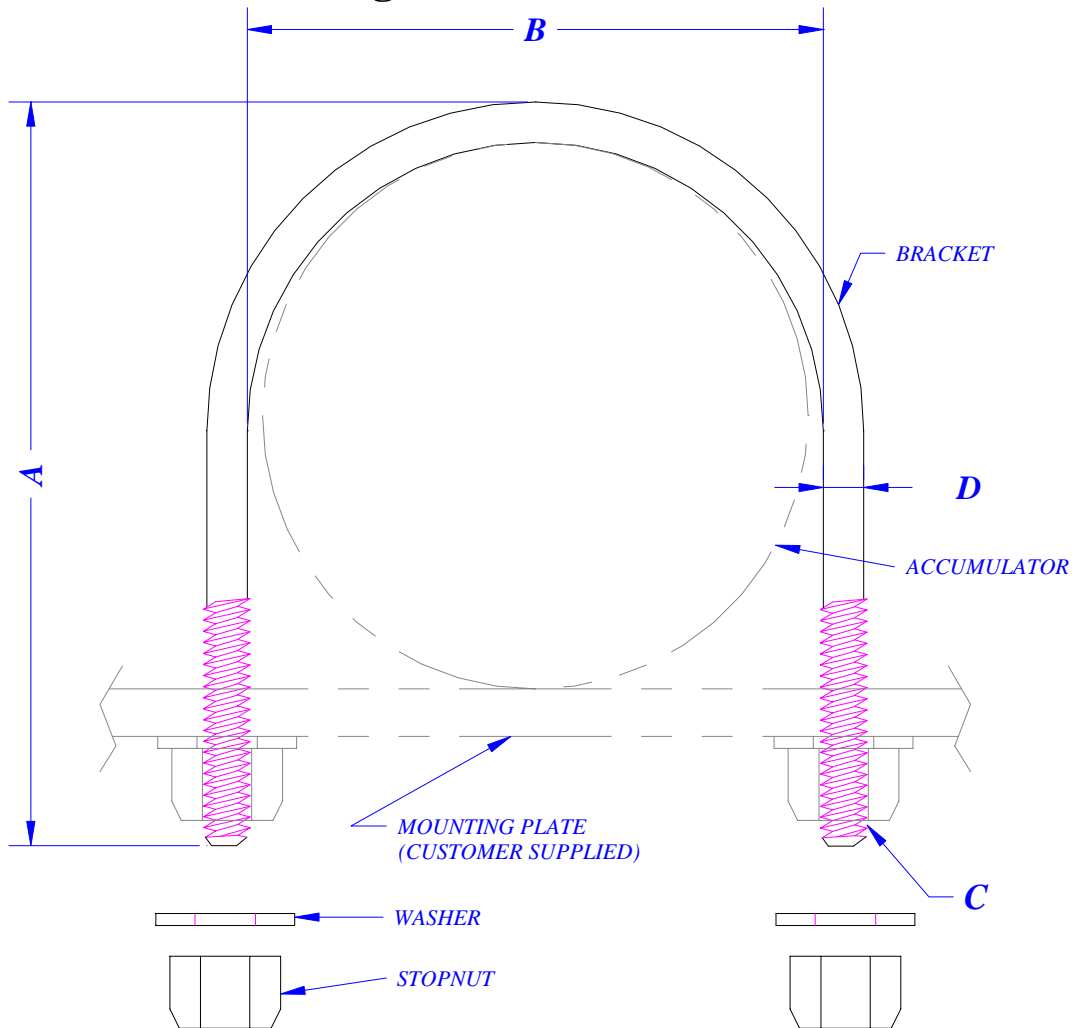


6000 psi Permanent Mount Pressure Monitor
 AI-PM6-000-SS

| List of Component Parts | | |
|-------------------------|--------------------------|---------------|
| | Description | Part Number |
| 1 | Gauge, 6000 psi | AI-CG6-501-SS |
| 2 | Cross, SS | AI-CG6-503-SS |
| 3 | Bleed Valve | AI-CG6-509-SS |
| 4 | High Pressure Gas Valve | AI-S6-309 |
| 5 | O-Ring | AI-S6-310 |
| 6 | Pressure Monitor Bushing | AI-PM6-033-SS |
| 7 | Valve Cap | AI-S-303 |

Note: These units are intended to be mounted permanently on the valve stem of the accumulator to monitor hydraulic system pressure. Nitrogen pre-charge may only be measured when hydraulic line pressure is zero (0) psig.

Mounting Hardware: U-Bolt Kits

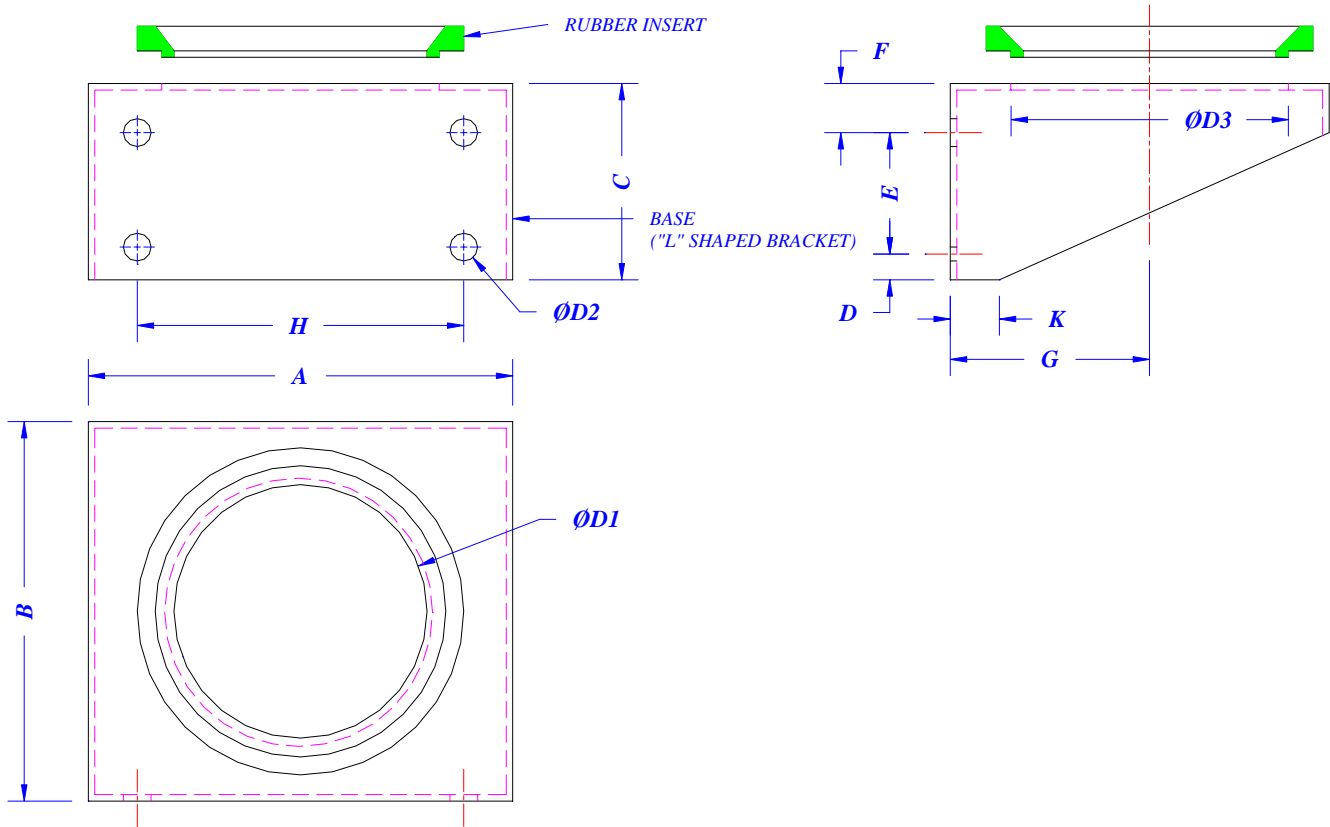


| Description | Part Number Standard | Part Number Stainless Steel | Part Number Coated | U-Bolts per Kit | A in. | B in. | C in. | D in. |
|--|----------------------|-----------------------------|--------------------|-----------------|-------|-------|--|-------|
| 1 Qt, 3000 & 5000 | AI-1QT-507-KIT | AI-1QT-507-KSS | AI-1QT-507-K-T | 1 | 6 | 4.5 | 2 x ³ / ₈ -16 UN | 0.3 |
| 1 Quart Washer | AI-1QT-509 | AI-1QT-509-SS | AI-1QT-509-T | | | | | |
| 1 Quart Stop Nut | AI-1QT-508 | AI-1QT-508-SS | AI-1QT-508-T | | | | ³ / ₈ -16 UN | |
| 1 Gallon, 3000 psi | AI-1-507-KIT | AI-1-507-KSS | AI-1-507-K-T | 1 | 10 | 6.8 | 3 x ¹ / ₂ -13 UN | 0.5 |
| 2 ¹ / ₂ Gallon, 3000 psi | AI-2.5-507-KIT | AI-2.5-507-KSS | AI-2.5-507-K-T | 1 | 12.3 | 9.4 | 3.5 x ¹ / ₂ -13 UN | 0.5 |
| 5-15 Gallon, 3000 psi | AI-507-KIT | AI-507-KSS | AI-507-K-T | 2 | 12.3 | 9.4 | 3.5 x ¹ / ₂ -13 UN | 0.5 |
| 1 Gallon, 6000 psi | AI-1-6-507-KIT | AI-1-6-507-KSS | AI-1-6-507-K-T | 1 | 10.6 | 7.3 | 3 x ¹ / ₂ -13 UN | 0.5 |
| 2 ¹ / ₂ -15 Gallon, 6000 | AI-S6-507-KIT | AI-S6-507-KSS | AI-S6-507-K-T | 2 | 13 | 10 | 3.5 x ¹ / ₂ -13 UN | 0.5 |
| 1-15 Gal. Washer | AI-509 | AI-509-SS | AI-509-T | | | | | |
| 1-15 Gal. Stop Nut | AI-508 | AI-508-SS | AI-508-T | | | | ¹ / ₂ -13 UN | |

Note: All mounting U-Bolts are sold in kit form with the appropriate elastic stop nuts and washers. All standard units are zinc plated. Coated units have a spray coating. Consult the factory for details.

Dimensions are nominal and may vary due to manufacturing tolerances.

Mounting Hardware: Bases (“L” Shaped Bracket)



Dimensions in inches

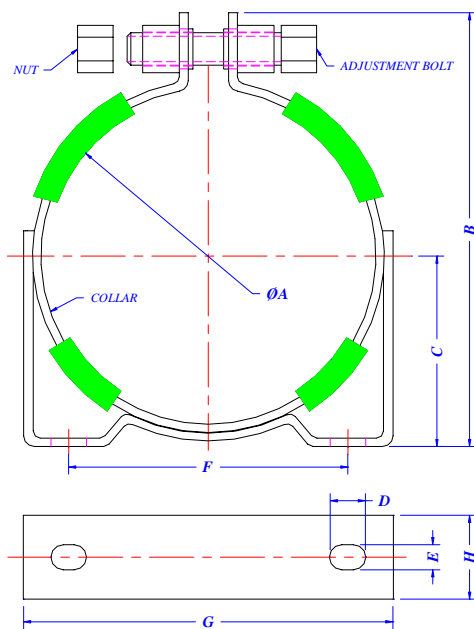
| Description | Part Number | A | B | C | D | D1 | D2 | D3 | E | F | G | H |
|---|---------------|------|-----|-----|-----|-----|-----|-----|-----|-----|-----|-----|
| 1 Quart 3000 & 5000 psi Base | AI-1QT-512 | 7.9 | 6.9 | 3.5 | 0.7 | 4.3 | 0.4 | 4.7 | 1.6 | 1.2 | 3.7 | 5.5 |
| 1 Quart Stainless Steel Base | AI-1QT-512-SS | 7.9 | 6.9 | 3.5 | 0.7 | 4.3 | 0.4 | 4.7 | 1.6 | 1.2 | 3.7 | 5.5 |
| 1 Gallon 3000 & 6000 psi Base | AI-1-512 | 10.2 | 8.9 | 3.9 | 1.0 | 4.3 | 0.7 | 4.7 | 1.6 | 1.4 | 3.6 | 7.9 |
| 1 Gallon Stainless Steel Base | AI-1-512-SS | 10.2 | 8.9 | 3.9 | 1.0 | 4.3 | 0.7 | 4.7 | 1.6 | 1.4 | 3.6 | 7.9 |
| 1 QT and 1 G Rubber Insert Replacement | AI-1QT-513 | | | | | 4.3 | | 4.7 | | | | |
| 2 1/2-15 Gallon 3000 & 6000 psi Base | AI-S-512 | 10.2 | 8.9 | 3.9 | 1.0 | 6.3 | 0.7 | 6.7 | 1.6 | 1.4 | 4.8 | 7.9 |
| 2 1/2-15 Gallon Stainless Steel Base | AI-S-512-SS | 10.2 | 8.9 | 3.9 | 1.0 | 6.3 | 0.7 | 6.7 | 1.6 | 1.4 | 4.8 | 7.9 |
| 2 1/2-15 Gallon Rubber Insert Replacement | AI-S-513 | | | | | 6.3 | | 4.7 | | | | |

Note: All mounting bases are sold in kit form and include the rubber insert. Mounting bolts are not included. Mounting collars sold separately. Replacement rubber inserts may be purchased separately. Mounting bases are zinc plated.

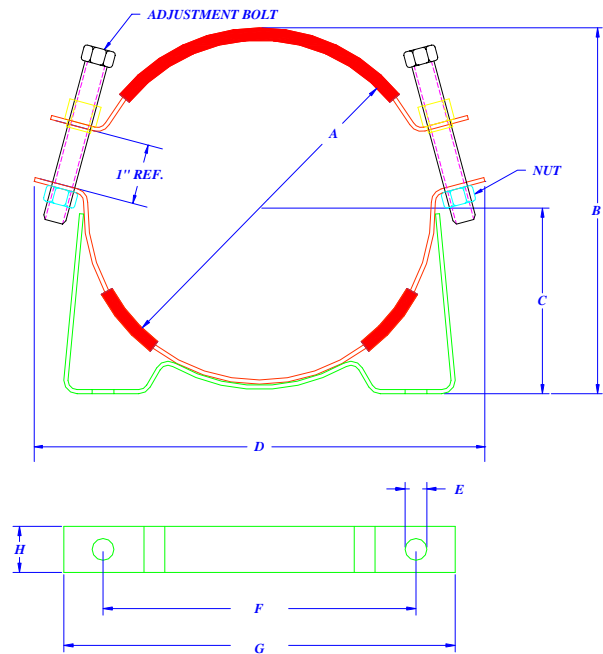
Dimensions are nominal and may vary due to manufacturing tolerances.

Mounting Hardware: Collars (Clamp)

1 Quart and 1 Gallon
 Fig. 1



2.5-15 Gallon
 Fig. 2



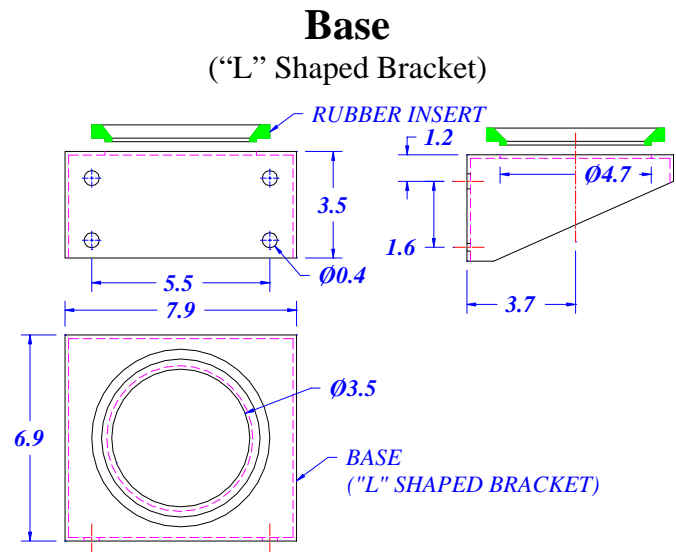
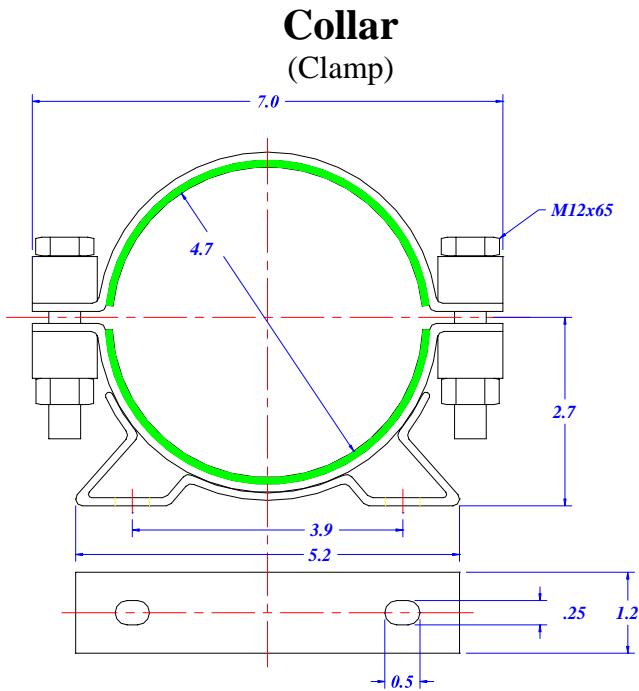
Dimensions in inches

| Description | Fig. | Part Number | A | B | C | D | E | F | G | H |
|---------------------------------|------|-------------|-----|------|-----|------|-----|-----|------|-----|
| 1 Quart Collar, 3000 & 5000 psi | 1 | AI-1QT-511 | 4.7 | 6.6 | 2.7 | 0.5 | 0.4 | 3.9 | 5.6 | 1.2 |
| 1 Gallon Collar, 3000 psi | 1 | AI-1-511 | 6.9 | 8.8 | 3.9 | 0.5 | 0.4 | 6.3 | 7.6 | 1.3 |
| 1 Gallon Collar, 6000 psi | 1 | AI-1-6-511 | 7.3 | 9.8 | 4.3 | 0.5 | 0.4 | 6.3 | 8.4 | 1.3 |
| 2.5-15 Gallon Collar, 3000 psi | 2 | AI-S-511 | 8.9 | 9.6 | 4.7 | 12.8 | 0.6 | 8.5 | 10.6 | 1.3 |
| 2.5-15 Gallon Collar, 6000 psi | 2 | AI-S6-511 | 9.5 | 10.3 | 5.3 | 13 | 0.6 | 8.5 | 10.6 | 1.3 |

Note: All mounting collars are sold in kit form including the appropriate adjustment bolts and rubber cushions. Mounting bolts are not included. All collars are plated with zinc. Stainless steel is available. Call factory for special order. Mounting bases sold separately.

Dimensions are nominal and may vary due to manufacturing tolerances.

Mounting Brackets: Collars and Bases for AccuMight[®]



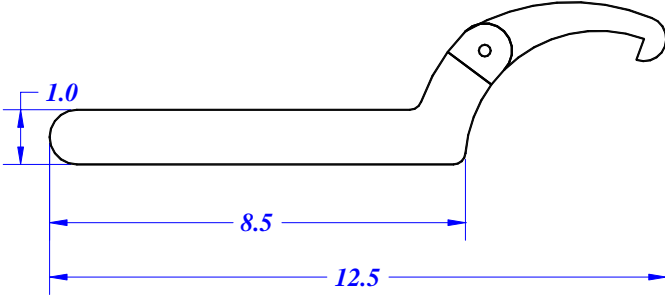
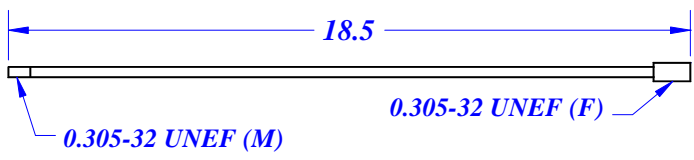
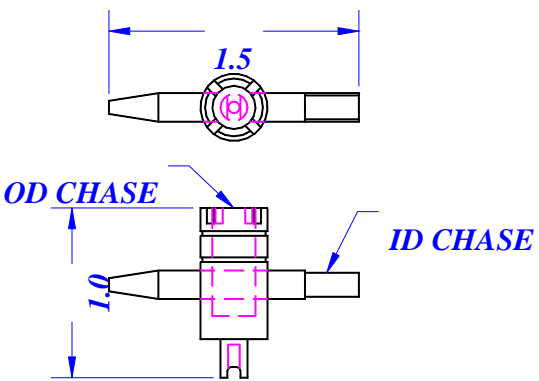
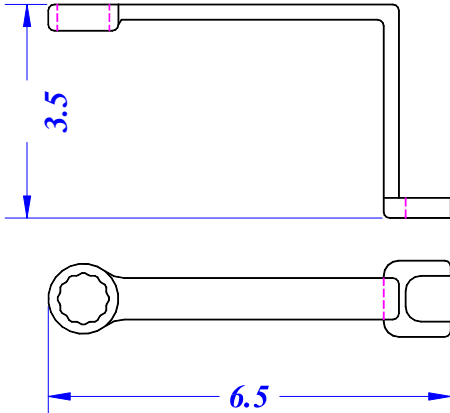
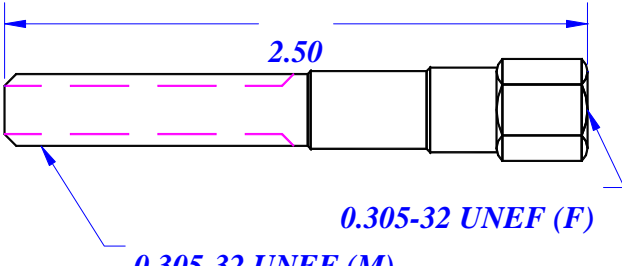
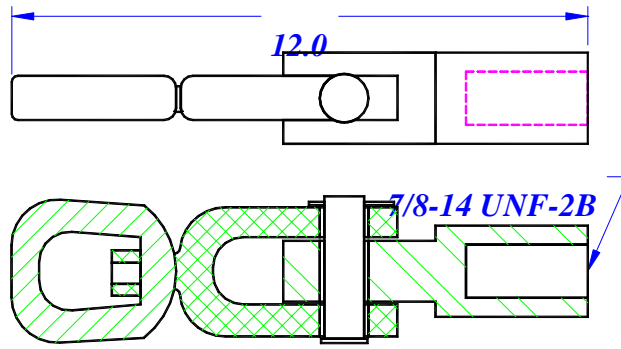
| Description | Part Number |
|-----------------------------|-------------|
| 90-150 ci AccuMight Clollar | AM-511 |

| Description | Part Number |
|----------------------------------|-------------|
| 30-150 ci AccuMight Base | AM-512 |
| Rubber Insert for AccuMight Base | AM-513 |

Note: All AccuMight collars are sold in kit form with the appropriate adjustment bolts and rubber cushions. All AccuMight bases are sold in kit form and include the rubber insert. Mounting bolts are not included. Replacement rubber inserts may be purchased separately. Collar and bases sold separately. Collars and bases are zinc plated.

Dimensions may vary due to manufacturing tolerances.

Accumulator Repair Tools

| Bladder Pull Rod | | | Spanner Wrench | |
|---|----------------|-------------|--|--|
| Part Number | For Sizes | Description | Part Number: AI-505 | |
| AI-501 | 1qt-2.5 Gallon | 1 pc kit |  | |
| AI-502 | 5 Gallon | 2 pc kit | | |
| AI-503 | 10-11 Gallon | 3 pc kit | | |
| AI-504 | 15 Gallon | 4 pc kit | | |
|  | | | | |
| Valve Core Tool | | | TR6 Gas Valve Tool | |
| Part Number: AI-506 | | | Part Number: AI-515 (2 pc set) | |
|  | | |  | |
| Gas Valve Extension, 3K | | | Accumulator Lifting Hook Assembly | |
| Part Number: AI-TR-015 | | | Part Number: AI-511 | |
|  | | |  | |