

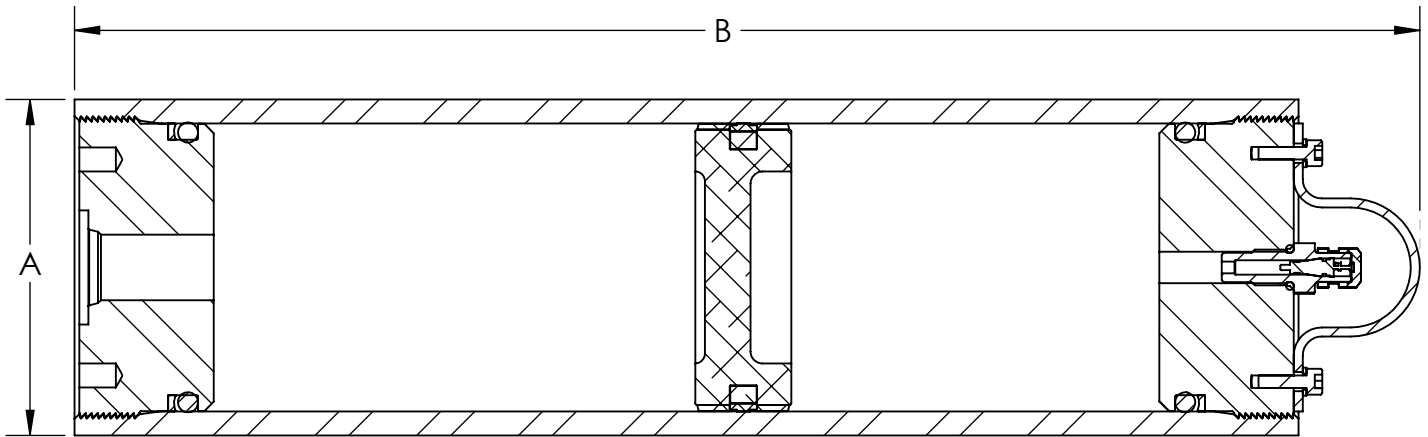


Houston, TX, USA

PROPRIETARY AND CONFIDENTIAL

This drawing and all information contained herein is the sole property of Accumulators, Inc. reproduction, manufacture, or use of the design is permissible only with the express written authorization of Accumulators, Inc.

3" BORE, 3000PSI PISTON ACCUMULATOR  
MODEL PAXX31003B0G1F



MODEL NUMBER	GAS CAPACITY		FLUID CAPACITY		DRY WEIGHT		"A" OD		"B" OVERALL		FLUID CONNECTION
	IN <sup>3</sup>	CM <sup>3</sup>	IN <sup>3</sup>	LITERS	LBS.	KG.	IN	MM.	IN	MM.	
PA.5PT31003B0G1F	19	311	18	0.3	11	5	3.50	89	7.50	191	SAE #8 ORB
PA1PT31003B0G1F	35	574	34	0.6	12	5.5	3.50	89	9.75	248	SAE #8 ORB
PA1QT31003B0G1F	68	1114	66	1.1	16	7.3	3.50	89	14.50	368	SAE #8 ORB
PA2QT31003B0G1F	124	2032	123	2.0	21	9.5	3.50	89	22.50	572	SAE #8 ORB
PA131003B0G1F	241	3949	240	3.9	33	15	3.50	89	39.00	991	SAE #8 ORB

**GENERAL SPECIFICATIONS:**

MATERIAL: SHELL & CAPS: CARBON ALLOY STEEL; PISTON: ALUMINUM

MAXIMUM WORKING PRESSURE: 3000 PSI (207 BAR)

HYDROSTATIC TEST PRESSURE: 4500 PSI (310 BAR)

OPERATING TEMPERATURE (BUNA/NITRILE): -20° to 200°F (-28° to 93°C)

BUNA/NITRILE SEALS STANDARD FOR PETROLEUM-BASED OILS.  
SEALS AVAILABLE FOR OTHER FLUIDS UPON REQUEST.