

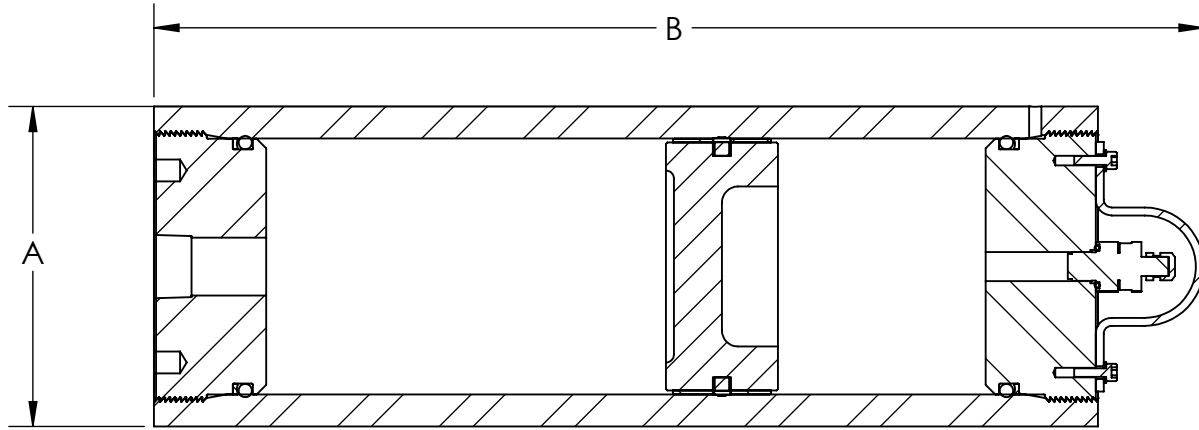


Houston, TX, USA

PROPRIETARY AND CONFIDENTIAL

This drawing and all information contained herein is the sole property of Accumulators, Inc. reproduction, manufacture, or use of the design is permissible only with the express written authorization of Accumulators, Inc.

4" BORE, 6000PSI PISTON ACCUMULATOR
W/3/4" NPT FLUID PORT



MODEL NUMBER	GAS CAPACITY		FLD CAPACITY		DRY WEIGHT		"A" OD		"B" OVERALL		FLD CONNECTION
	IN ³	CM ³	IN ³	LITERS	LBS.	KG.	IN	MM.	IN	MM.	
PA1QT61004B10G11F	64	1049	60	1.0	33	15.0	5.0	127	11.50	292	3/4" NPT
PA2QT61004B10G11F	126	2065	122	2.0	43	19.5	5.0	127	16.50	419	3/4" NPT
PA161004B10G11F	240	3933	235	3.9	61	27.7	5.0	127	25.50	648	3/4" NPT
PA2.561004B10G11F	584	9570	579	9.5	116	52.7	5.0	127	53.00	1346	3/4" NPT
PA461004B10G11F	930	15240	926	15.2	171	77.7	5.0	127	80.50	2045	3/4" NPT

GENERAL SPECIFICATIONS:

MATERIAL: SHELL & CAPS: CARBON ALLOY STEEL; PISTON: ALUMINUM

MAXIMUM WORKING PRESSURE: 6000 PSI (414 BAR)

HYDROSTATIC TEST PRESSURE: 9000 PSI (620 BAR)

OPERATING TEMPERATURE (BUNA/NITRILE): -20° to 200°F (-28° to 93°C)

BUNA/NITRILE SEALS STANDARD FOR PETROLEUM-BASED OILS.
SEALS AVAILABLE FOR OTHER FLUIDS UPON REQUEST.