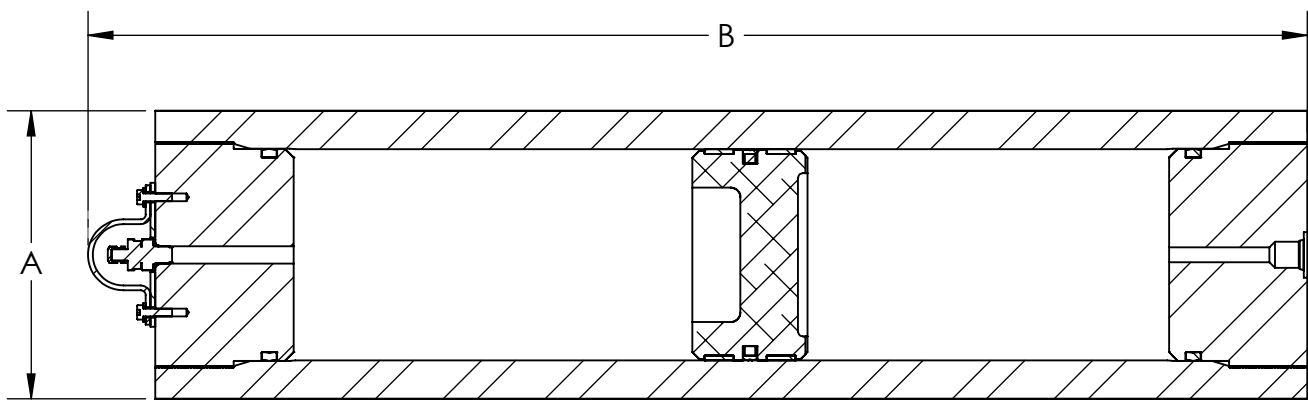




PROPRIETARY AND CONFIDENTIAL
 This drawing and all information contained herein is the sole property of Accumulators, Inc. reproduction, manufacture, or use of the design is permissible only with the express written authorization of Accumulators, Inc.

**5.50" BORE, 7500PSI PISTON ACCUMULATOR
 ASME B & PV CODE-COMPLIANT
 MODEL PXY7.51005.5B10G1FSS**



MODEL NUMBER	VOL	GAS CAPACITY		FLUID CAPACITY		DRY WEIGHT		"A" OD		"B" OVERALL		FLD CONN
	GALS	IN ³	CM ³	IN ³	LITERS	LBS.	KG.	IN	MM.	IN	MM.	
PX2.57.51005.5B10G1FSS	2.5	596	9767	584	9.6	257	116.8	7.50	191	36.50	927	SPL #8 ORB
PX57.51005.5B10G1FSS	5.0	1174	19238	1161	19.0	399	181.4	7.50	191	60.75	1543	SPL #8 ORB

GENERAL SPECIFICATIONS:

MATERIAL: SHELL: CA6NM SS; CAPS: F51 DUPLEX SS; PISTON: 6061-T6 ANOD ALUM

MAXIMUM INTERNAL WORKING PRESSURE: 7500 PSI (517 BAR)

MAXIMUM EXTERNAL WORKING PRESSURE: 4500 PSI (310 BAR)

HYDROSTATIC INTERNAL TEST PRESSURE: 11250 PSI (776 BAR)

OPERATING TEMPERATURE (HNBR/H-POLY): -20° to 180°F (-28° to 93°C)

ASME-COMPLIANT PISTON ACCUMULATOR