

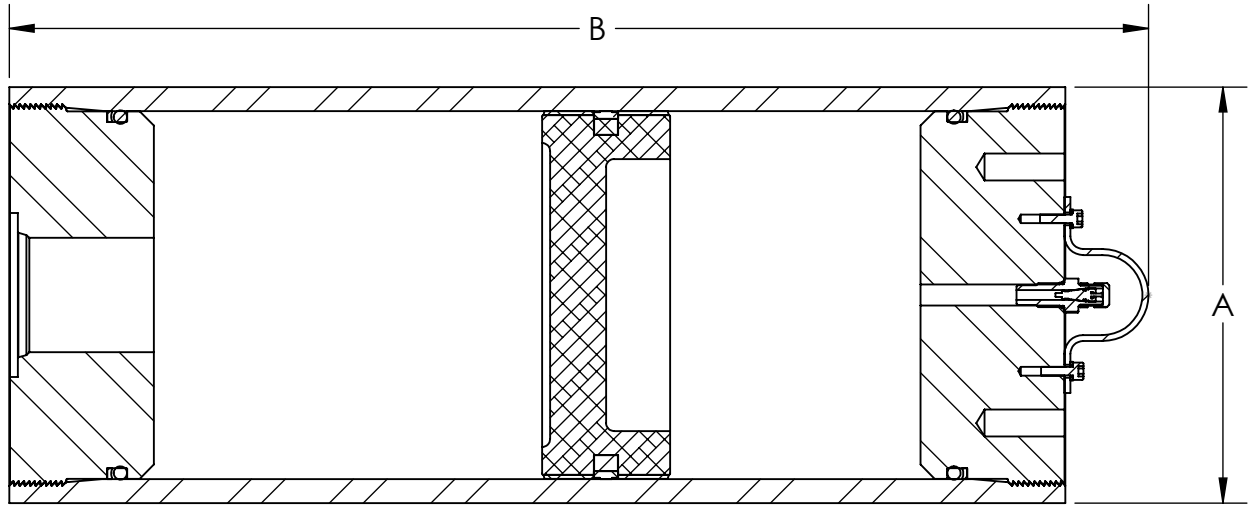


Houston, TX, USA

PROPRIETARY AND CONFIDENTIAL

This drawing and all information contained herein is the sole property of Accumulators, Inc. reproduction, manufacture, or use of the design is permissible only with the express written authorization of Accumulators, Inc.

6" BORE, 3KPSI -R1 PISTON ACCUMULATOR W/#24 ORB FLD PORT



MODEL NUMBER	GAS CAPACITY		FLUID CAPACITY		DRY WEIGHT		"A" OD		"B" OVERALL		FLUID CONNECTION
	IN ³	CM ³	IN ³	LITERS	LBS.	KG.	IN	MM.	IN	MM.	
PA131006B0G4F-R1	244	3998	231	3.8	67	30.5	6.50	165	16.50	419	SAE #24 ORB
PA2.531006B0G4F-R1	598	9799	584	9.6	94	42.7	6.50	165	30.0	762	SAE #24 ORB
PA531006B0G4F-R1	1168	19140	1155	18.9	139	63.2	6.50	165	52.0	1321	SAE #24 ORB
PA7.531006B0G4F-R1	1753	28727	1739	28.5	185	84.1	6.50	165	74.50	1892	SAE #24 ORB
PA1031006B0G4F-R1	2335	38264	2321	38.0	231	105.0	6.50	165	97.0	2464	SAE #24 ORB
PA12.531006B0G4F-R1	2908	47654	2894	47.4	276	125.5	6.50	165	119.0	3023	SAE #24 ORB

GENERAL SPECIFICATIONS:

MATERIAL: SHELL & CAPS: CARBON ALLOY STEEL; PISTON: ALUMINUM

MAXIMUM WORKING PRESSURE: 3000 PSI (207 BAR)

HYDROSTATIC TEST PRESSURE: 4500 PSI (310 BAR)

OPERATING TEMPERATURE (BUNA/NITRILE): -20° to 200°F (-28° to 93°C)

BUNA/NITRILE SEALS STANDARD FOR PETROLEUM-BASED OILS.

SEALS AVAILABLE FOR OTHER FLUIDS UPON REQUEST.