

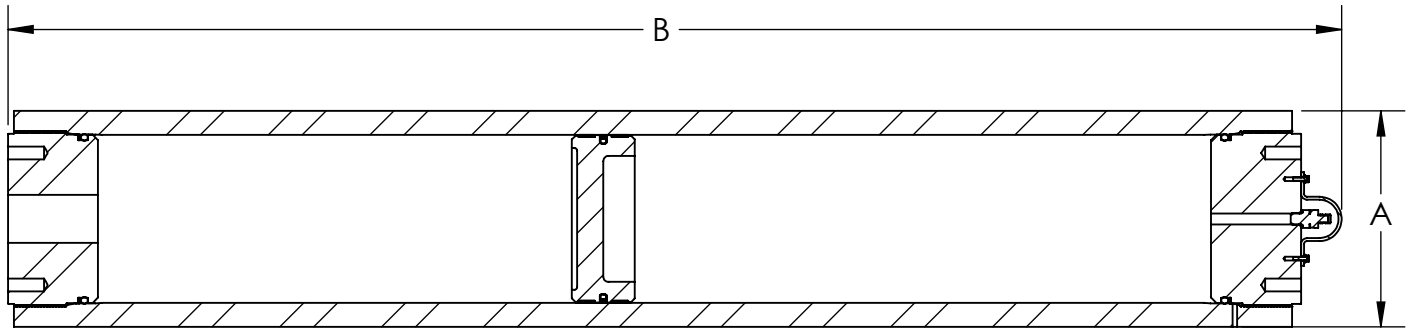


Houston, TX, USA

PROPRIETARY AND CONFIDENTIAL

This drawing and all information contained herein is the sole property of Accumulators, Inc. reproduction, manufacture, or use of the design is permissible only with the express written authorization of Accumulators, Inc.

7" BORE, 6000PSI PISTON ACCUMULATOR
ASME B & PV CODE-COMPLIANT
MODEL PXY61007B10G32F



MODEL NUMBER	VOLUME GALS	GAS CAPACITY		FLUID CAPACITY		DRY WEIGHT		"A" OD		"B" OVERALL		FLD CONNECTION
		IN ³	CM ³	IN ³	LITERS	LBS.	KG.	IN	MM.	IN	MM.	
PX561007B10G32F	5.0	1188	19468	1166	19.1	397	180.5	9.13	232	41.50	1054	SAE C62 #32 4B
PX1061007B10G32F	10.0	2343	38395	2321	38.0	625	284.1	9.13	232	71.50	1816	SAE C62 #32 4B
PX12.561007B10G32F	12.5	2921	47867	2899	47.5	739	335.9	9.13	232	86.50	2197	SAE C62 #32 4B
PX1561007B10G32F	15.0	3498	57322	3476	57.0	853	387.7	9.13	232	101.50	2578	SAE C62 #32 4B
PX2061007B10G32F	20.0	4648	76167	4626	75.8	1080	490.9	9.13	232	131.50	3340	SAE C62 #32 4B
PX2561007B10G32F	25.0	5820	95373	5798	95.0	1311	595.9	9.13	232	162.00	4115	SAE C62 #32 4B
PX3061007B10G32F	30.0	6975	114300	6953	113.9	1539	699.5	9.13	232	192.00	4877	SAE C62 #32 4B

GENERAL SPECIFICATIONS:

MATERIAL: SHELL: Q & T ALLOY STEEL; CAPS: HS ALLOY CS; PISTON: STEEL

MAXIMUM WORKING PRESSURE: 6000 PSI (414 BAR)

HYDROSTATIC TEST PRESSURE: 9000 PSI (620 BAR)

OPERATING TEMPERATURE (NBR/PTFE): -20° to 180°F (-28° to 93°C)

ALTERNATE SEALS & PISTONS AVAILABLE FOR LOW & HIGH TEMP APPLICATIONS
[DOWN TO -40°F (-40°C) AND UP TO 250°F (121°C)] AND EXOTIC WORKING FLUIDS

ASME-COMPLIANT PISTON ACCUMULATOR