

SAFETY BLOCKS

BLADDER ACCUMULATORS - ACCESSORIES

Our accumulator safety block is a multifunctional valve placed between the hydraulic accumulator and the operating system. The safety block allows for isolation of the accumulator for maintenance or system testing, and will function as an emergency shut-off device or pressure relief valve to protect the hydraulic system from overpressurization or system failure.

Our accumulator safety blocks incorporate the following components:

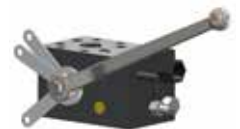
- 90-degree full-orifice ball valve to isolate the accumulator from the system
- Manual adjustable safety relief valve
- Manually-operated bleed valve; bleeds down accumulator safely
- Optional female port for pressure gauge options
- Manual release handle standard

SAFETY BLOCK	BLEED VALVE	ACCUMULATOR SIDE CONNECTION	DISCHARGE SIDE CONNECTION	GAUGE	EXAMPLE
ASB	M	FK3	FK3	G1	= ASB-M-FK3-FK3-G1

800 SERIES CONFIGURABLE SAFETY BLOCK					
SAFETY BLOCK	BLEED VALVE	DESCRIPTION	ACCUMULATOR SIDE CONNECTION	DISCHARGE SIDE CONNECTION	GAUGE
ASB Configurable Accumulator Safety Block Core	M Manually Operated	Split Flange Kits (includes o-ring(s), bolts and washers)	FK3 2" Code 61	FK3 2" Code 61	G1 3000 psi dry
			FK6 1.5" Code 62	FK6 1.5" Code 62	G2 3000 psi liquid fill SS
		Adapter Connector Kits - 3000 psi (includes split flange kit)	A31 2" NPT (female)	A31 2" NPT (female)	G3 5000 psi dry
			A36 1 7/8"-12 SAE (male)	A36 1 7/8"-12 SAE (male)	G4 5000 psi liquid fill SS
		Adapter Connector Kits - 6000 psi (includes split flange kit)	A61 1 5/8"-12 SAE (male)	A61 1 5/8"-12 SAE (male)	G5 6000 psi dry
			A62 1 7/8"-12 SAE (male)	A61 1 7/8"-12 SAE (male)	G6 6000 psi liquid fill SS
	E Solenoid Operated	Four Bolt Flange Adapter Plate Kits (includes o-ring(s), bolts and washers)	P31 2" NPT (female)	P31 2" NPT (female)	00 (none)
			P61 1.5" NPT (female)	P61 1.5" NPT (female)	
			P66 1 7/8"-12 SAE (female)	P66 1 7/8"-12 SAE (female)	
		No Connection (block is drilled for split and four-bolt flanges)	000 (none)	000 (none)	

This model is designed for our 2.5 through 15 gallon accumulators. Best suited for use with SAE split flange connections for ease of installation and maintenance. The SAE split flanges are either code 61 or code 62 series. This model is rated up to 5800 PSI MAWP.

- Optional solenoid-operated dump valve
- Optional lock-out plate included that can restrict access to valve position



800 SERIES

850 SERIES FIXED-PORT SAFETY BLOCK		
Safety Block-Manual Bleed Valve 1 5/8" SAE Connections	Complete package with fixed connections. Gauge is optional.	ASB-850-1
Safety Block-Manual Bleed Valve 1 1/16" SAE Connections		ASB-850-2

Our 850 series block is designed for use with our 1 quart and 1 gallon bladder accumulators equipped with female SAE fluid ports. Safety block outlet port is available in SAE -8, -12 and -20 sizes. This model is rated up to 5000 PSI MAWP.



850 SERIES

Other sizes and types of connections are available. Contact us for details and pricing.

Flange kits, adapter kits, adapter plates, gauges, bolts, washers and seals can be ordered separately as replacement parts. Optional solenoids as well as custom parts are also available. Contact us for details and pricing.