

# SAFETY BLOCKS

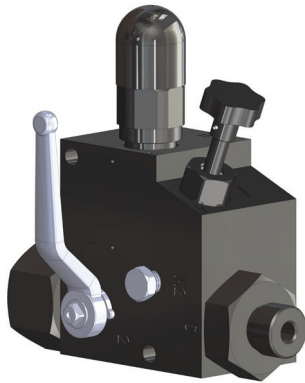
## BLADDER ACCUMULATORS - ACCESSORIES

Our accumulator safety block is a multifunctional valve placed between the hydraulic accumulator and the operating system. The safety block allows for isolation of the accumulator for maintenance or system testing, and will function as an emergency shut-off device or pressure relief valve to protect the hydraulic system from overpressurization or system failure.

Our accumulator safety blocks incorporate the following components:

- 90-degree full-orifice ball valve to isolate the accumulator from the system
- Manual adjustable safety relief valve
- Manually-operated bleed valve; bleeds down accumulator safely
- Optional female port for pressure gauge options
- Rated to 5800 PSI
- Manual release handle standard

See [accumulators.com/safetyblocks.html](http://accumulators.com/safetyblocks.html) for more information.



MODEL 1 | ASB-850

Model one is designed for use with our 1 quart and 1 gallon bladder accumulators equipped with female SAE fluid ports. Safety block outlet port is available in SAE -8, -12 and -20 sizes.



MODEL 2 | ASB-800

This model is designed for our 2.5 through 15 gallon accumulators. Best suited for use with SAE split flange connections for ease of installation and maintenance. The SAE split flanges are rated for code 61 or code 62 series.

- Optional solenoid-operated dump valve
- Optional lock-out plates to avoid unauthorized access to open or close valve